

architecturenz

# Specifier products guide

ISSUE 19 | SUMMER 2020



Offering the leading range of roofing and cladding solutions  
[dimond.co.nz](http://dimond.co.nz)

 **Dimond Roofing**  
GET THE EDGE



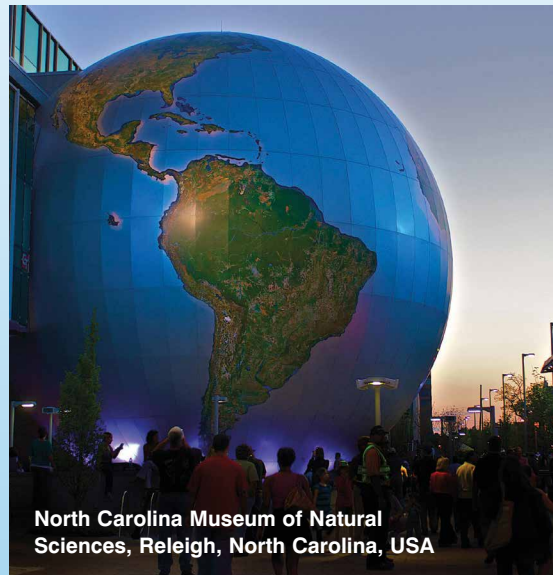
Globally Proven Construction Solutions

# Proven Installation Systems for Tile and Stone Applications

Vapour Reduction Underlayments Crack Suppressions Shower System Waterproofing\*  
Sound Control Floor Warming Adhesives Mortars Grouts Sealant



Cayan Tower, Dubai, UAE



North Carolina Museum of Natural Sciences, Raleigh, North Carolina, USA



Harvard Law School, Cambridge, Massachusetts, USA

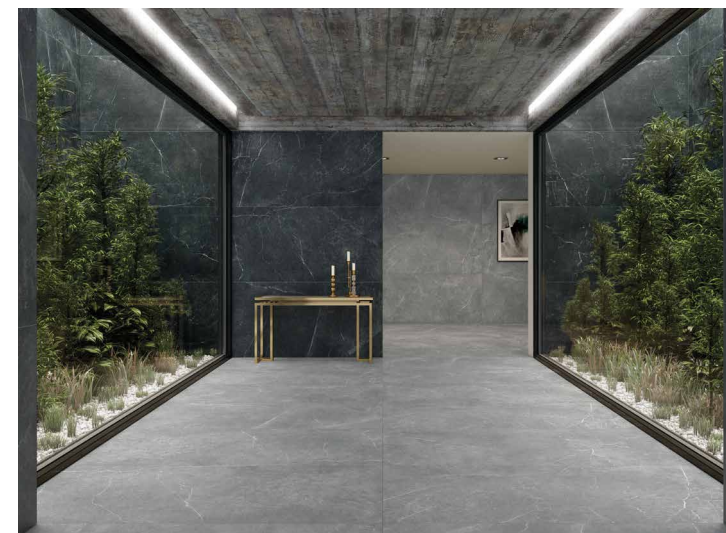
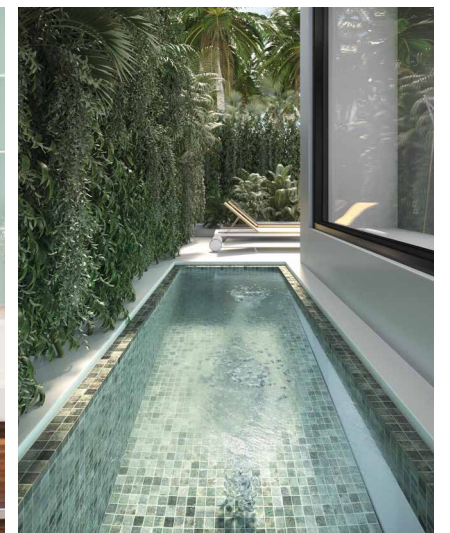
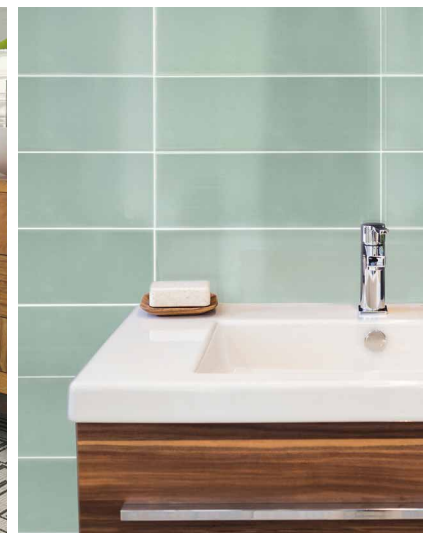


Marina Bay Sands Singapore Infinity Edge Pool at the Sands Skypark, Singapore



The Beijing Natural Aquatics Centre, Beijing, China

Worldwide Availability ■ Industry Standard ■ Code Approved ■ 25 Year System Warranty ■ On Site Technical Support



\*Laticrete Hydro Ban - the new industry standard for waterproofing membrane



Exclusive New Zealand distributor for:



3 /118 Asquith Avenue, Mt. Albert, Auckland 1023  
P: 09 634 0712 E: enquire@globaltile.co.nz  
www.globaltile.co.nz

# architecturenz

# Specifier products

## guide

SUMMER 2020



**PROJECT MANAGEMENT**  
**DESIGN SERVICES**  
**PUBLISHER**  
**ADMINISTRATION**

Mark Lipman  
André Kini  
Thomas Cannings  
Nathan Inkpen  
Elliot Ferguson

The Specifier Products Guide 2020 is a special supplement to *Architecture New Zealand*. *Architecture New Zealand* is published bimonthly by BCI New Zealand Pty Ltd, Level 2, 409 New North Road, Kingsland, Auckland, New Zealand. Postal address: Private Bag 99915, Newmarket, Auckland 1149, New Zealand. Tel 09 846 4068. Fax 09 846 8742.

Advertising statements and editorial opinions expressed in the Specifier Products Guide do not reflect the views of BCI and its staff, unless expressly stated. The publisher disclaims any responsibility for any firm or individual failing to perform the services advertised in this publication.



## Contents

- |                             |                                 |                       |                                    |
|-----------------------------|---------------------------------|-----------------------|------------------------------------|
| <b>02</b> Global Tile       | <b>10</b> Sealed Air            | <b>16</b> Rockcote    | <b>23</b> The Fireplace            |
| <b>06</b> Tasman Insulation | <b>11</b> Selleys               | <b>17</b> Harrows     | <b>24</b> New Zealand Panels Group |
| <b>07</b> Mitek             | <b>12</b> RoofingSmiths         | <b>18</b> Soudal      |                                    |
| <b>08</b> INZIDE            | <b>14</b> Waterproofing Systems | <b>19</b> Crestline   |                                    |
| <b>09</b> ACO               | <b>15</b> Northpine             | <b>20</b> AIS Equinox |                                    |
|                             |                                 | <b>22</b> Décortech   |                                    |



**ON THE COVER**  
Wanaka Wedge House,  
Central Otago.

- 1 DuPont™ Tyvek® roof underlays**
- Tyvek® Supro / Supro Plus
  - Tyvek® Pro
  - Tyvek® Metal

- 2 DuPont™ Tyvek® wall underlays**
- Tyvek® HomeWrap®
  - Tyvek® Pro

- 3 DuPont™ Tyvek® Tapes**
- Tyvek® FlexWrap™ NF
  - Tyvek® Contractor Tape
  - DuPont™ Flashing Tape
- Ⓢ = Fire Retardant



## PERFORMANCE BEYOND PROTECTION WITH DUPONT™ TYVEK®

When DuPont® invented Tyvek®, it invented building wrap. Now enjoy the exceptional product performance of DuPont™ Tyvek® with no-nonsense service guarantee of Pink® Batts®.

**The Pink® Batts® insulation team** is now partnering with DuPont™ to distribute Tyvek® building envelope solutions in New Zealand. The whole range is focused on protecting the building envelope – making buildings more durable, comfortable and energy efficient. Product offerings include wall underlays, roof underlays and tapes. Tried and tested to New Zealand conditions, all DuPont™ Tyvek® products, except Tyvek® Contractor Tape, come with the added assurance of CodeMark™ certification. Key components are:

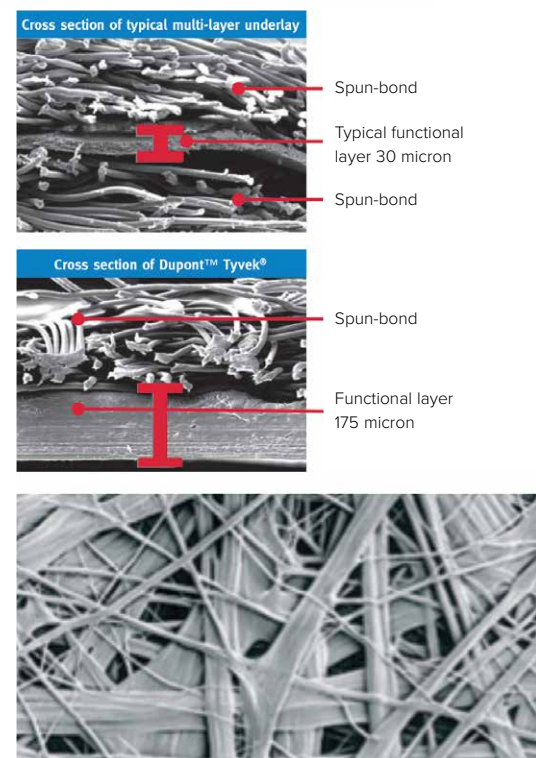
**DuPont™ Tyvek® HomeWrap®:** Breathable, fire retardant synthetic wall underlay that provides up to 120 days UV resistance

**DuPont™ Tyvek® Roof Underlays:** Three high-performance DuPont™

Tyvek® roof underlays. DuPont™ Tyvek® Supro and Supro Plus are self-supporting, fire retardant synthetic roof underlays – with the Plus option coming with an integrated tape system. In addition, DuPont™ Tyvek® Metal has an 8mm drainage mat to maintain a separation layer between the roof cladding and the underlay.

**DuPont™ Tyvek® Tapes:** Full range of DuPont™ tapes to ensure weathertight installation around penetrations, doors and windows. Options include DuPont™ Flashing Tape, Tyvek® Contractor Tape and the innovative DuPont™ Tyvek® FlexWrap™ – a one-piece, flexible flashing tape.

**For further details, visit** [pinkbatts.co.nz/dupont](http://pinkbatts.co.nz/dupont)



Unique structure of DuPont™ Tyvek®, which offers superior durability throughout the product thickness.



PHONE 0800 746 522 WEBSITE [pinkbatts.co.nz/dupont](http://pinkbatts.co.nz/dupont)

# AO ARCHITECTURE

MITEK - QUALITY IS MORE THAN MAKING A GOOD PRODUCT



“MITEK OFFER EASIER SOLUTIONS, THE PRODUCTS ARE EASIER TO USE ONSITE AND EASIER FOR US TO SPECIFY”



ADNZ MEMBER, MICHAEL JOHN OF AO ARCHITECTURE, STARTED HIS FIRM IN 2011 AND HAS BEEN SPECIFYING MITEK ON PROJECTS SINCE BECOMING AN ARCHITECTURAL DESIGNER.

One of Michael's recent projects, Mount Gold Place, received two major awards in the Otago/Southland ADNZ Resene Architectural Design Awards. The Lake Wanaka home won joint place in the Residential New Home over 300m2 Architectural Design Award category and the Resene Colour in Design Award.

Michael says he selected MiTek because of its reputation and that it is ubiquitous in the building industry. With the use of MiTek products, Michael and the engineers involved were able to complete elements of the SIPs panel house in a non-standard way. Added trusses were designed over the garage wing for storage and a lot of non-standard connections were made using MiTek's CPC fixings, bolts and brackets. A number of MiTek products were used on the project including lintel fixings, straps, metal angles bracing roof, veranda brackets, CPC fixings for hold downs in all the SIP's panels (GIB HANDIBRAC®), joist hangers for roofing and floor joists, stainless joist hangers and multi grips for deck and truss was designed by MiTek Software.

Michael said MiTek makes life easier than standard 3604 / NZBC detailing and that products have proven to work well on site.

“MiTek offer easier solutions, the products are easier to use onsite and easier for us to specify,” says Michael.

After having recently attended a seminar by MiTek, Michael likes that the brand continues to be innovative and was impressed with their new screw fixings.

So how does MiTek stay innovative and go about developing new products and taking them to the market?

With a passion for engineering, design, functionality and of course quality, MiTek is continually looking to develop ideas and provide the very best solutions to suit the specific requirements of the NZ Building Code.

On the development of an idea, a team of engineers look into the NZ building code to deliver better solutions. Once the decision has been made to go ahead with a product, and the material and the design have been determined, the individual product traits are specified with the manufacturing team and quality management department. Following this, marketing and sale professionals and quality developers are responsible for the product launch, its planning and execution.

The process doesn't end after products are shipped to customers. Regular monitoring of the product performance, manufacturing process - whether on the basis of product samples or on site - is an essential component of quality assurance for MiTek.

MiTek know it's critical to provide design and development support throughout the product lifecycle that translates into higher quality products and improved customer satisfaction. MiTek sales staff and customer services ensure that issues are captured accurately, acted upon, and resolved as quickly as possible.



FLOORING SYSTEMS

# SARLIBASE ACOUSTIC UNDERLAY FOR:

Luxury Vinyl Tile, Vinyl Sheet  
Marmoleum & Carpet Tile

*The ultimate acoustic flooring solution*

- ✓ Dry & Wet-room Acoustic Underlay
- ✓ IIC >55 Rating
- ✓ 15 Year Product Warranty
- ✓ Masterspec 6813FS



- Flooring
- Permanent Adhesive
- 2mm Sarlibase Acoustic Underlay
- Permanent Adhesive
- Concrete Slab



## DOES YOUR THRESHOLD DRAINAGE MEET CODE?

If you're a builder or subcontractor, code compliant level threshold drainage is easier to achieve than you might think.

The design of a level threshold drainage system is not as simple as it first seems. The E2 Building Code is very prescriptive in what will be allowed. Let ACO help with choosing the correct product for your application.

### E2 Building Code

Clause 7.3.2.1 of the Code lists the requirements for an acceptable solution for level threshold drainage:

- A channel that is 150mm deep, 200mm wide
- Maximum channel length of 3.7m
- 1:200 minimum fall to outlet

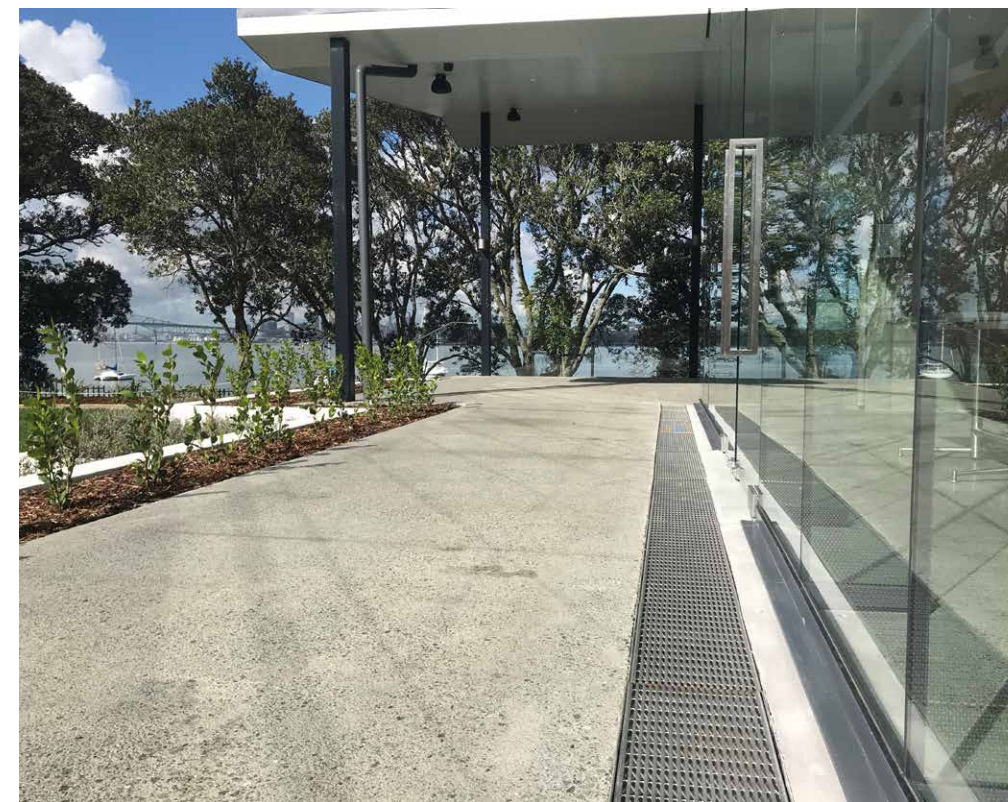
The grating over the channel must:

- Be able to be fully removed for maintenance
- Be supported independently of the door frame, without spacers
- Have a continuous gap of 12mm

To meet E2 Building Code, a cast in-situ channel is required with a grate that does not rely on the channel base or door joinery for support. Legs sitting in the channel base can impact waterproofing quality and obstruct water flow to the outlet. A complete blockage of the channel can even cause water to back up into the cladding cavity.

### ThresholdDrain

ACO's level threshold drainage products fully comply with the E2 Building Code requirements. ACO Cantilever ThresholdDrain is supported by the cantilever arm and ACO OnePour ThresholdDrain is a bolted bracket system that uses the landscaping concrete for its support.



Cantilever ThresholdDrain is ideal for tile and paved exteriors and can be scheduled so the landscaping contractor is not interfering with the installation of the drain. OnePour ThresholdDrain is perfect for concrete floor finishes. Neither product requires a rubber spacer or leg for structural integrity.

### Alternative solutions

If site conditions allow, a precast grated channel or slot drain can be installed against the building as a level threshold alternative solution. This is often quicker and easier to install and means outlets can be spaced up to 80m centres. Product selections include ACO KlassikDrain or Brickslot, and PowerDrain for heavy duty traffic applications.

Alternative solutions need to be addressed on a project-by-project basis. To meet consent, most councils require manufacturers' calculations to demonstrate performance. ACO offers a free hydraulic design service and can provide product details at all stages of the project.

Call or email ACO today.

ABOVE: ACO KlassikDrain KS200 with Wedgewire Heelsafe anti-slip 5 star grate at Chelsea Bay.

CENTRE RIGHT: ACO Cantilever ThresholdDrain with Stainless Heelsafe longitudinal grate at the ASB Waterfront Theatre.

RIGHT: ACO Cantilever ThresholdDrain with Ductile Iron Heelsafe anti-slip grate at Christchurch Justice & Emergency Services Precinct – Te Omeka.



PHONE 0800 448 080 EMAIL info@aconz.co.nz  
WEBSITE aconz.co.nz



## ACOUSTIC MATERIAL OF THE FUTURE

Featuring Stratocell Whisper®, a new acoustic product designed to deal with common issues faced when using conventional acoustic materials.

Stratocell Whisper® is a polyolefin foam manufactured by Sealed Air, where networked closed cells form a matrix of honeycomb-like cavities to efficiently absorb noise using minimal material.

In restaurants, classrooms, recreation facilities and industrial applications, it's important to have acoustic absorption that is washable, impact resistant, and can tolerate long-term moisture exposure. Stratocell Whisper® is perfect for these applications as dust, dirt and water do not adhere to its low surface energy faces.

Independently verified to maintain acoustic absorption following 28-day condensing moisture exposure, Stratocell Whisper® excels when the

going gets tough. When you need to control reverberation, Stratocell Whisper® FR is a safe choice for interiors with a Group 1-S fire rating from BRANZ and the Danish Society of Indoor Climates' rigorous particle emission standards.

50mm FR product features an NRC of 1, and a weight of 1.25 kilograms per square metre. Stratocell Whisper® can be easily cut, shaped, bent and installed in ways that can set your creativity free. Stratocell Whisper® also improves transmission losses with a RW of 13.8 at 50mm in isolation.

Specify Stratocell Whisper® FR for interiors and Stratocell Whisper® UV for outdoor acoustic applications; contact us for further information.



TOP: MAXXI Museum in Rome, Italy using Whisper® hanging circular baffles.

ABOVE CENTRE: A restaurant in Bolzano, Italy using custom cut Whisper® sheets.

ABOVE: Otaki Pool in Wellington, New Zealand using vertical hanging baffles.



PHONE 0800 32 42 52 EMAIL Keith.Proctor@sealedair.com  
WEBSITE sealedair.com.au/stratocellwhisper

## It's What's Underneath That Counts

Selleys® Liquid Nails® Timber Flooring system has been trusted by flooring experts for over 15 years, and in that time, there has been the equivalent of over 5.5 million square metres of flooring laid.

The Liquid Nails® Timber Flooring system has been a critical element for laying flooring in such establishments as the Auckland Art Gallery, and many bars, retail stores, offices and architectural spaces both commercial and residential. James Henry Flooring Ltd have been using Selleys® Liquid Nails® VBS and flooring adhesives for 10 years. Chris Northmore, Owner/Manager of James Henry Ltd, says his tradesmen like using these products because they work and have had no failures whatsoever, which is important to maintain their high level of craftsmanship and reputation.

Selleys® range of timber flooring products have been developed to support trends in flooring from classic timber floors, to growing trends in customised parquetry, and to the more commercial prefinished floors. There is a trusted product to specialise in each application such as Liquid Nails® Vapour Barrier System to protect against moisture vapour transfer, the original Liquid Nails® Direct Stick™ which has excellent bond strength, Direct Stick™ Low Foam for parquetry and TimberFlex™ which is a solvent free advanced polymer technology formula.

To find out more on the Liquid Nails Flooring System, visit [www.selleys.co.nz/trade](http://www.selleys.co.nz/trade)



**SELLEYS®**  
**LIQUID NAILS®**  
TIMBER FLOORING SYSTEM



Work done by James Henry Ltd | Wellington



# Master Craftsmen

At RoofingSmiths® we're craftsmen; master roofers capable of delivering roofing and cladding solutions of the highest calibre across a broad range of profiles. That's why architects and builders choose us.

**ROOFINGSMITHS® ARE TRAINED INSTALLERS OF EUROTRAY®, HERITAGE TRAY® AND SOLAR-RIB®.**

► [ROOFINGSMITHS.CO.NZ](https://www.roofingsmiths.co.nz)



## Experience with creative vision

RoofingSmiths® is a nationally recognised roofing installation brand with branches across New Zealand.

RoofingSmiths® are independently owned and operated teams of expert roofers who understand the importance of choosing the right profile for the project and installing the roof to exacting standards.

RoofingSmiths® is backed by Dimond® Roofing who hand-pick them as their exclusive installers of architectural products. Dimond® Roofing brings the reputation of a brand that is respected and known throughout New Zealand, representing solid and reliable service.

The RoofingSmiths® vision is to create a national network trusted to deliver a finished product that exceeds the expectations of both the designer and the owner.



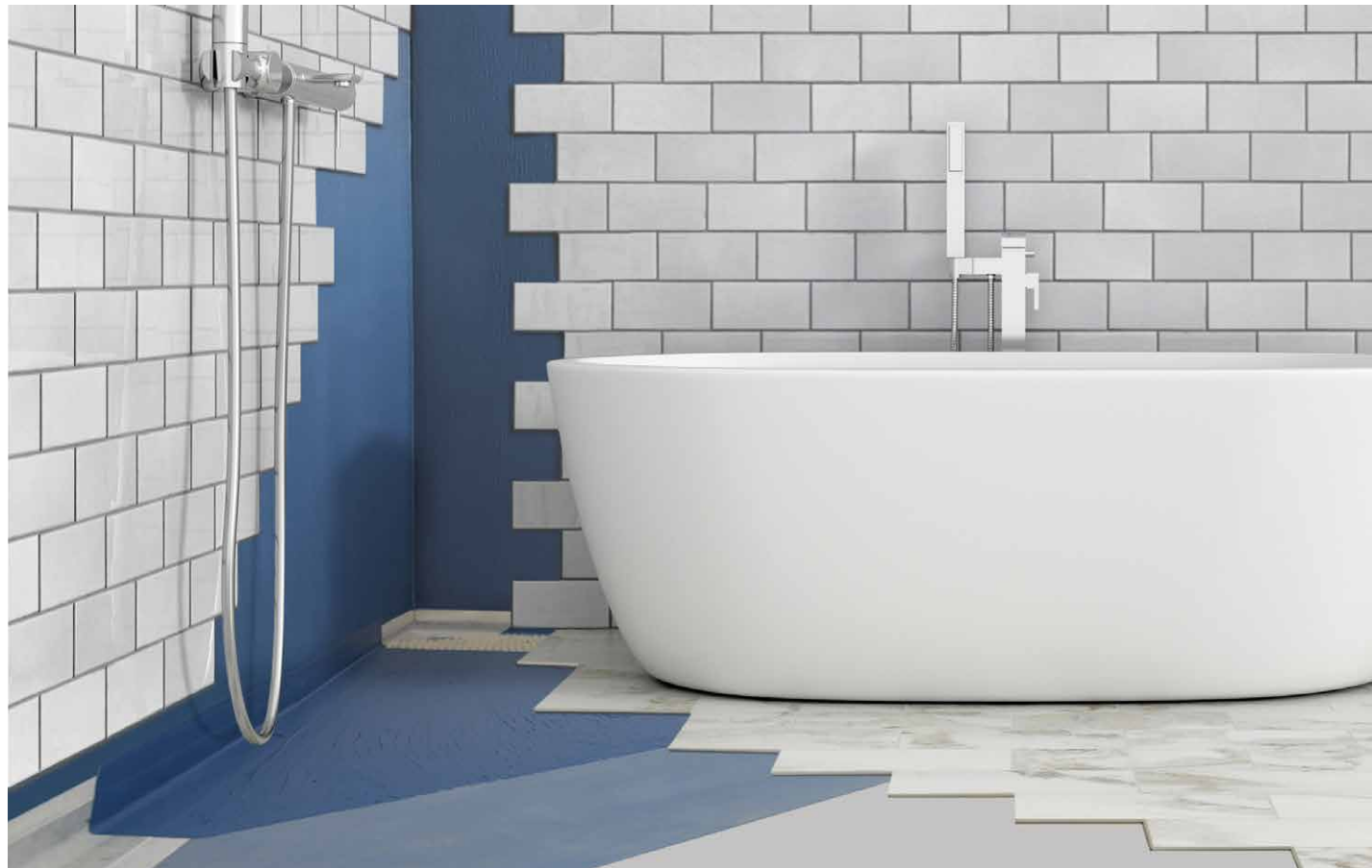
Architects and builders choose RoofingSmiths® because they know they have the experience, understanding and creative vision to meet the demands of any project and to bring any design to life.



**ROOFINGSMITHS®**

► CRAFTING QUALITY ROOFS ◄

► [ROOFINGSMITHS.CO.NZ](https://www.roofingsmiths.co.nz)



## INTERNAL WET AREA WATERPROOFING SYSTEM

Gripset 38 is a complete system of specialist liquid products to keep bathrooms and wet areas watertight and compliant.

### Waterproofing Membrane

Gripset 38 FC is a next-generation, water-based, fast-curing, fibre-reinforced, SBR latex membrane designed for waterproofing tile-finished wet areas, showers and laundries. Compliant to AS/NZS4858:2004 and AS4654.1:2012, Gripset 38 FC satisfies the requirements of AS3740:2010 and AS4654.2:2012 for waterproofing to internal areas.

### Elastoproof Detailing

Gripset Elastoproof is designed as a bond breaker system to accommodate longitudinal, lateral and transverse movement. It provides high elongation and rupture resistance, with elasticity of up to 100% recovery.

The system includes a bond breaker joint band, prefabricated corners, base collars, multi-purpose self-adhesive tape and self-adhesive squares.

### C-Bed Screed

Gripset C-Bed is a premium, polymer-enhanced, high-performance screed for forming falls in wet area showers. Its unique formulation provides excellent water resistance and high strength properties. Gripset C-Bed can form part of the Gripset 38 FC Masterspec and Warranty system.

Call us today for more information, or visit [www.waterproofing.co.nz](http://www.waterproofing.co.nz)



ABOVE: Application of the easy-to-use Gripset Elastoproof bond breaker system.



PHONE 09 579 1460 WEBSITE [waterproofing.co.nz](http://waterproofing.co.nz)



## SG8 / SG10 SPAN TABLES HELP SPECIFIERS

Specifying Northbeam timber beams and square posts can increase spans, improve stud centres and reduce timber volumes. The tables are free to download online.

Northbeam timber beams and square posts are now available via building supply merchants nationwide. They are extremely strong and dense, in lengths of up to 7.2 metres, with a wide range of uses.

Stuart Dale, director of consultancy firm Architectural Promotions, talks frequently with architects, engineers, designers and specifiers. He gets to hear about the many issues facing them as they strive to deliver innovation and efficiencies for their clients.

One of Stuart's clients is Northpine, manufacturers of the Northbeam product range.

"Northbeam can be used for many purposes – sub-floor, lintels, joists, rafters and so on... but also for decks, exposed beams, walkways and pergolas. They are extremely strong and dense beams and posts, capable of taking big loads."

Northpine's mill at Waipu is set up to process beams and posts of SG8 and SG10 up to 7.2 metres long. (Most mills have a maximum length of 6 metres.)

The advantages of Northbeam are numerous – increased spans, improved stud centres and reduced timber volumes.



ABOVE: Northbeam was chosen for the new wharf at Camp Bentzon, Kawau Island.

LEFT: Northbeam was chosen for this home in Bream Bay and then painted.

A set of Span Tables based on NZS3604:2011 is freely available online.



Download your Northbeam Span Tables here: [www.northpine.co.nz/northbeam](http://www.northpine.co.nz/northbeam)



PHONE 0508 432 115  
WEBSITE [northpine.co.nz/northbeam](http://northpine.co.nz/northbeam)



# Architecture & Craftsmanship

Driven to create surfaces that make a living environment durable, feel and look good to live in, we believe the tactile nature of plaster cladding is unrivaled.

The construction process contains many facets which when combined, and applied accurately make for a shining, and durable example of the construction process - from the clients needs, the Architecture, through to the selection of products, and the professional trades people that apply their skills.

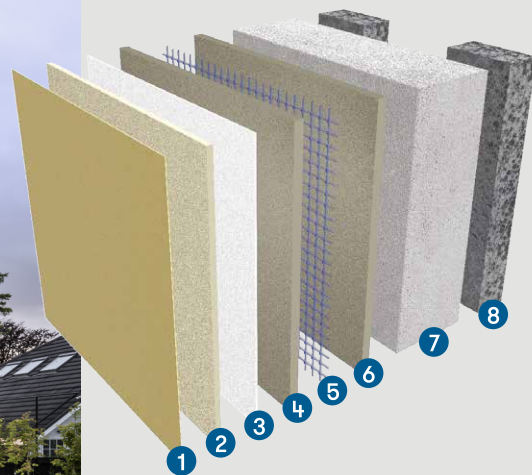
At Resene Construction Systems we only promote tested & trusted products, solutions and practice for each and every project we work on.

Visit our website to discover more about our exciting range of facade systems, bespoke interior finishes, and construction products.

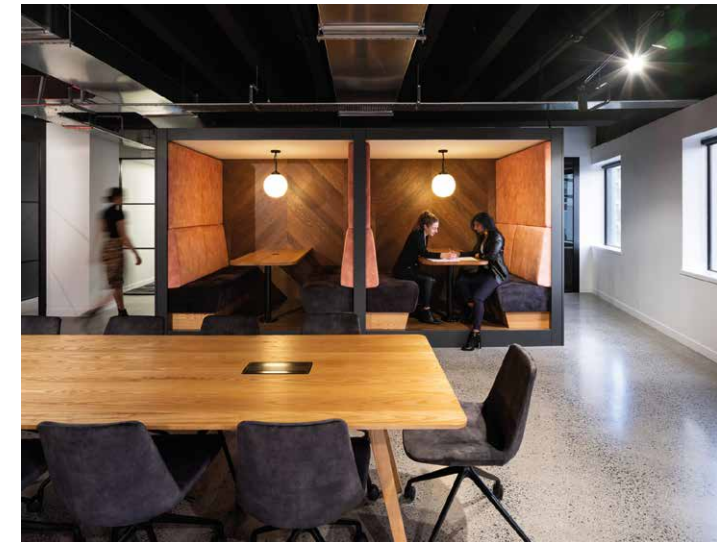


www.reseneconstruction.co.nz | 0800 50 70 40

Cladding Systems  
+  
Interior Systems  
+  
Construction Products



- 1 Resene X 200
- 2 Pre-Coloured Texture
- 3 Resene Limelock
- 4 PM100 Quick Render
- 5 Fibreglass Reinforcing
- 6 PM100 Quick Render
- 7 INTEGRA Lightweight Concrete
- 8 Cavity Battens



## HARROWS, MADE FOR HOSPITALITY

Stand out from the crowd through beautifully made, fit-for-purpose furniture.

**Harrows collaborates with architects** and designers to create spaces that stand out from the crowd through beautifully made, fit-for-purpose furniture.

**Let's make it. Personal.**

We believe in a more personalised approach, inspiring our customers through possibilities – ultimately providing a competitive edge. Our unique combination of in-house manufacturing and carefully selected imported product brings you a consistent collection that is high quality and highly customisable.

**Let's make it. Local.**

It's a family thing. Led by three brothers who learnt the craft of furniture making from an early age, Harrows has three generations and over 30 years' experience in furniture making. We're able to bring

our own designs, innovations and NZ-Made collections to the market. In 2019 we launched our Banquette Revolution, a complete banquette solution that delivers a finished banquette with the soft fit out.

**Let's make it. Social.**

At Harrows, we define hospitality as much more than the traditional restaurant, but a broader concept to encompass any space designed with the intention of bringing people together. It's the ability to leave people better off for having experienced such a space. We specialise in these 'social spaces'; from cafés, bars and restaurants through to office cafeterias, meeting rooms, universities, libraries and airports.

**Your go-to furniture supplier for social spaces.**

**TOP LEFT:** Corner Burger, Newmarket. Made by Harrows, the booth seats capture the feeling of a traditional American diner in a contemporary way. Designer: Material Creative

**TOP RIGHT:** Office and Meeting Spaces. This interior fit out at DB Interiors' own office showcases the versatility of the Harrows collection.

**ABOVE LEFT:** Three Seven Two, Waiheke. "When the chairs arrived, I was struck by how they really matched that authentic yet unpretentious feel we were trying to achieve." Helen Carter, Owner. Designer: Ctrl Space

**ABOVE RIGHT:** Nelson Airport. Social spaces of the largest kind where the client requested one point of supply for furniture. Designer: Studio Pacific Architecture

**HARROWS**  
MADE FOR HOSPITALITY

PHONE 0800 142 233  
WEBSITE harrows.co.nz

**NEW ZEALAND  
INNOVATION**

**EUROPEAN  
PERFORMANCE**

**Gorilla sealants, adhesives and technical products are now backed by Soudal, the largest independent European manufacturer of sealants, adhesives and polyurethane foams for professional users.**

Our extensive knowledge of the New Zealand building industry, coupled with the quality and performance of Soudal's global manufacturing capabilities deliver a European promise of quality and excellence that you can trust.

To find the best sealants and adhesives to specify on your next project go to [Soudal.co.nz](http://Soudal.co.nz) and contact one of our Specialist Industrial team or go to Masterspec CBI 4811 SG



**YOU ARE  
LOOKING  
AT ONE OF  
THE WORLD'S  
MOST  
POPULAR  
ERGONOMIC  
CHAIRS**



**The Sidiz T50. An exceptional office chair that provides unparalleled support – where and when you need it.**

As the winner of six international design awards, with 1.6 million T50s sold in the 10 years since its launch (30,000+ of these currently in use throughout New Zealand), you only need to sit in this chair once to realise why people all around the globe, of all ages, shapes and sizes, choose to sit in the T50.

Sit in it all day and still go home feeling great. This is truly one of the world's most popular ergonomic chairs.



*"We worked closely with Crestline and Gaze Commercial to find the right furniture to meet the needs of our space and our 1200 employees. After extensive analysis and on-site trials, the Sidiz T50 chair was also chosen as one of our 'chairs of choice' going forward. Throughout the course of this project, we have purchased over 1000 T50 chairs and we continue to choose this chair because of its unparalleled combination of ergonomic features, comfort and value for money."* Emma Platt – Datacom NZ

**Crestline**  
Furniture Systems

PHONE 09 257 5015 WEBSITE [crestline.co.nz](http://crestline.co.nz)



## DISCOVERING THE LATEST BUILDING PRODUCTS SHAPING OUR ARCHITECTURAL LANDSCAPE

**Equinox connects design professionals with industry-leading products, technologies and suppliers.**

**Equinox is a series of boutique evening** exhibitions held across the Asia Pacific region, designed exclusively for architects, interior designers and design specifiers. With an emphasis on exploration, inspiration and education, Equinox is the event for all design professionals to discover New Zealand's state-of-the-art building products, technologies and innovations.

With complimentary registration, specifiers are invited to experience the intimate and relaxed environment of Equinox, complete with cocktails, canapés, showbags, prizes and expert presentations. Broaden your horizons and network with the best-of-the-best product suppliers, practices and professionals in the industry. Join us at Equinox.

**EQUINOX CHRISTCHURCH**  
Thu. 5th March, 5:30pm – 7:30pm  
Christchurch Town Hall

**EQUINOX AUCKLAND**  
Thu. 2nd April, 6pm – 8:30pm  
Pullman Auckland

**EQUINOX WELLINGTON**  
Thu. 13th August, 5:30pm – 7:30pm  
Michael Fowler Centre

Register for your complimentary ticket at: [aisaustralia.com](http://aisaustralia.com)

**AIS** Architectural Information Services

EMAIL [mika@aisaustralia.com](mailto:mika@aisaustralia.com) PHONE 0430 289 030

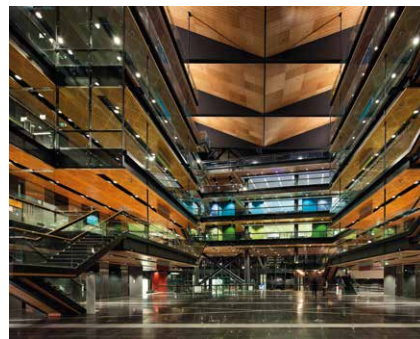
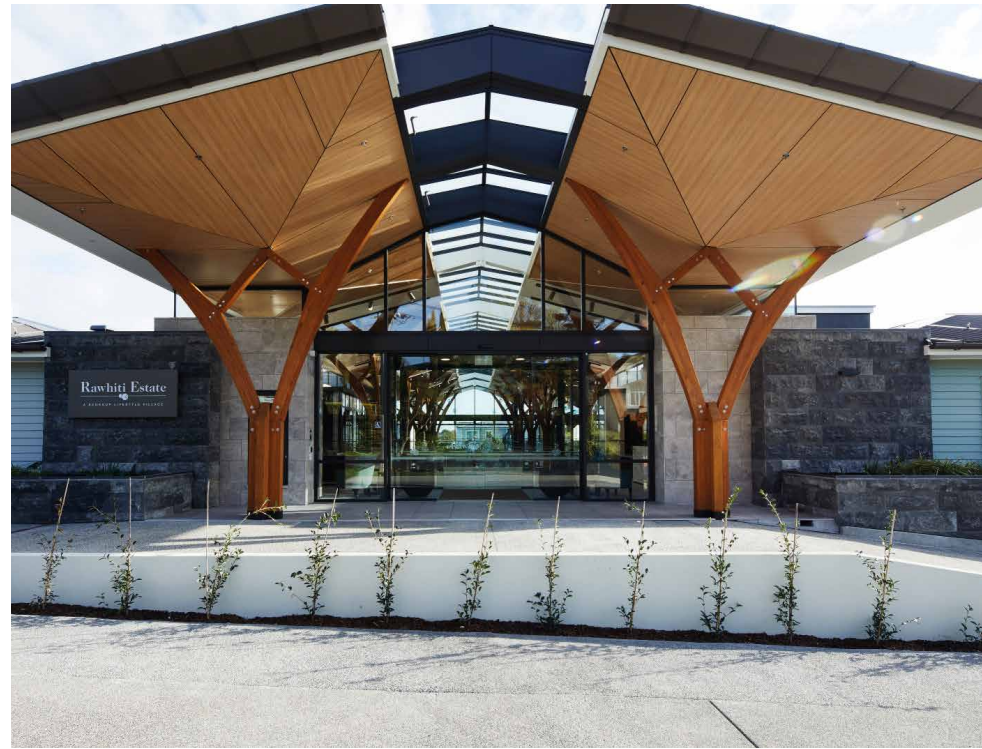
## INSPIRATIONAL INTERIORS, EXCEPTIONAL EXTERIORS

Combining Décortech Interior Panels with Trespa Exterior Cladding provides a one-stop solution for any project, creating seamless transitions from interior to exterior.

**Trespa Meteon Exterior Cladding** is the perfect complement to Décortech's Acoustic Decorative and Fire-Retardant wall and ceiling panels, making it easy to create indoor outdoor flow.

Always cutting edge, Décortech and Trespa are committed to new products, ideas and innovation, working closely with architects to ensure vision becomes reality.

Specified on some of New Zealand's finest buildings, Décortech is a name you can trust, and a product you can love.



**ABOVE:** MIT Manukau & Transport Interchange, FSC Certified Silver Beech veneer & Custom Perforations.

**TOP RIGHT:** Rawhiti Estate, Firesafe MDF with Tasmanian Ash Veneer & Multigroove Perforations Interior. Trespa Meteon Elegant Oak PXF System on the soffits.

**CENTRE RIGHT:** St Andrew's College Chapel – American White Oak Veneer Non-Perforated Interior with Trespa Meteon Elegant Oak PXF System on the soffits.

**RIGHT:** Mercury Fitout, Firesafe Decorply Plywood with Multigroove Perforations.



PHONE 09 579 5726 WEBSITE [decortech.co.nz](http://decortech.co.nz)

# FIRE YOUR IMAGINATION

## STOVAX

Studio 2 – Clean Air wood burning fireplace

The Fireplace

LEADING BRANDS • TECHNICAL EXPERTISE • INSTALLATION ADVICE

[thefireplace.co.nz](http://thefireplace.co.nz)

*Warm your soul*

# Prime Veneer

## Keep it real.

**You can't go past the beauty and warmth of natural timber veneer to create interiors that are inspiring and uniquely individual.**

Prime Art Veneer  
Formatt Bespoke Joinery Co

Prime Panels offers three stunning veneer collections that give you a myriad of options to make the most of this naturally beautiful product. We have more than 40 Natural Veneers, nine Recon Veneers plus four heavily textured Art Veneers for added impact. All our veneers are sustainably sourced and carry Environmental Choice NZ accreditation. We hand-select each sheet and press onto your choice of substrate.

**0800 477 463 / [primepanels.co.nz](http://primepanels.co.nz)**

**PrimePanels<sup>NZ</sup>**

**New Zealand  
Panels** GROUP 